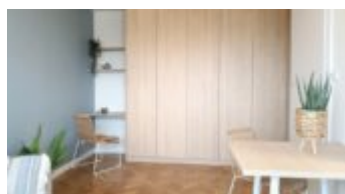
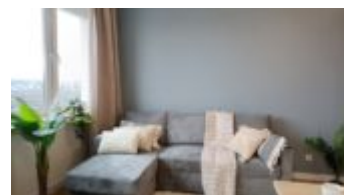


Warszawa, Śródmieście

XXXXXX 27 m<sup>2</sup>

27 метрів | 1 кімнати | 14 Поверх

Ціна **3 400 PLN**  
ціна за м<sup>2</sup> **126 PLN**





A unique studio apartment on **the 14th floor** , **Tamka** Street, next to **the University of Warsaw, the University of Music and the Academy of Fine Arts.**

The apartment **has undergone a complete renovation** – new bathroom, new kitchen, and new furniture. We invite you to move in!

**14TH FLOOR | TAMKA | PANORAMIC CITY VIEW | NEAR THE UNIVERSITY AND NOWY ŚWIĘT | STUDIO APARTMENT | SEPARATE KITCHEN | FURNISHED | FOR RENT**

The apartment is available, we invite you to view it.

**APARTMENT DESCRIPTION:** The apartment is located on the 14th floor of a 17-story building. Three large windows offer **exceptional views of Powiśle and the Praga skyline** . It consists of a bright living room with a beautiful view of Powiśle and the National Stadium, a separate kitchen (with a half-wall overlooking the room), and a bathroom with a window.

**Apartment after renovation, fully furnished – new furniture.**

The room features a fold-out corner sofa, a very large wall-mounted wardrobe with a desk, a table, two chairs, and a TV stand. The kitchen is equipped with a large new built-in refrigerator, oven, washing machine, and hob. The bright bathroom has a large shower and a sink with a cabinet and mirror.

**BUILDING:** 17-story building with elevators. On the ground floor, there's a LIDL store and a gym.

**LOCATION:** The apartment is located in the very center of Warsaw, on the corner of **Tamka and Kopernika streets**, right next to the most prestigious streets of Warsaw, next to Nowy Świat, Krakowskie Przedmieście, and Świętokrzyska Street. **350 m to the Nowy Świat-Uniwersytet metro station (4-minute walk)** , 150 m to the Fryderyk Chopin University of Music (2-minute walk), 350-700 m to numerous faculties of the University of Warsaw (4-6 minute walk).

**NEIGHBORHOOD:** The apartment is located in the historic part of the city, very popular with both **residents and tourists** . The surrounding streets are bustling with cafes, restaurants, bars, and clubs. Nearby are museums, theaters, universities, a hospital, and the Royal Route.

**TRANSPORT:** To the **Nowy Świat metro station: 4 minutes**, many bus stops nearby.

**FOR WHOM:** This apartment is ideal for a single person or a couple. It's a perfect option for those connected to the University of Music or the University of Warsaw looking for a small apartment in the city center. An additional advantage of this location is its proximity to the Royal Route, Powiśle, and the Old Town – the most popular, historic areas in the capital.

**FEES :** Rent: PLN 3,400/month,  
Administrative costs – approx. PLN 330.

The tenant pays for electricity according to consumption and fees for water, heating and garbage collection.

**DEPOSIT:** PLN 3,700

As a real estate agency, we charge commission for our brokerage services. This announcement is for information purposes only and does not constitute an offer within the meaning of Article 66 § 1 of the Civil Code.

□□'□□□□□□ □ □□□, □□□ □□□□□□□□ □□ □□□□□□.

**+48 537 500 745**

**biuro@warsawproperties.pl**