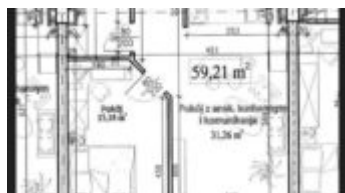
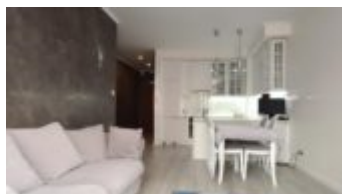
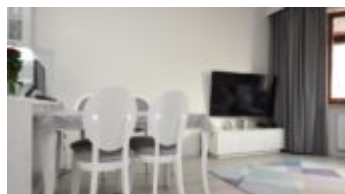
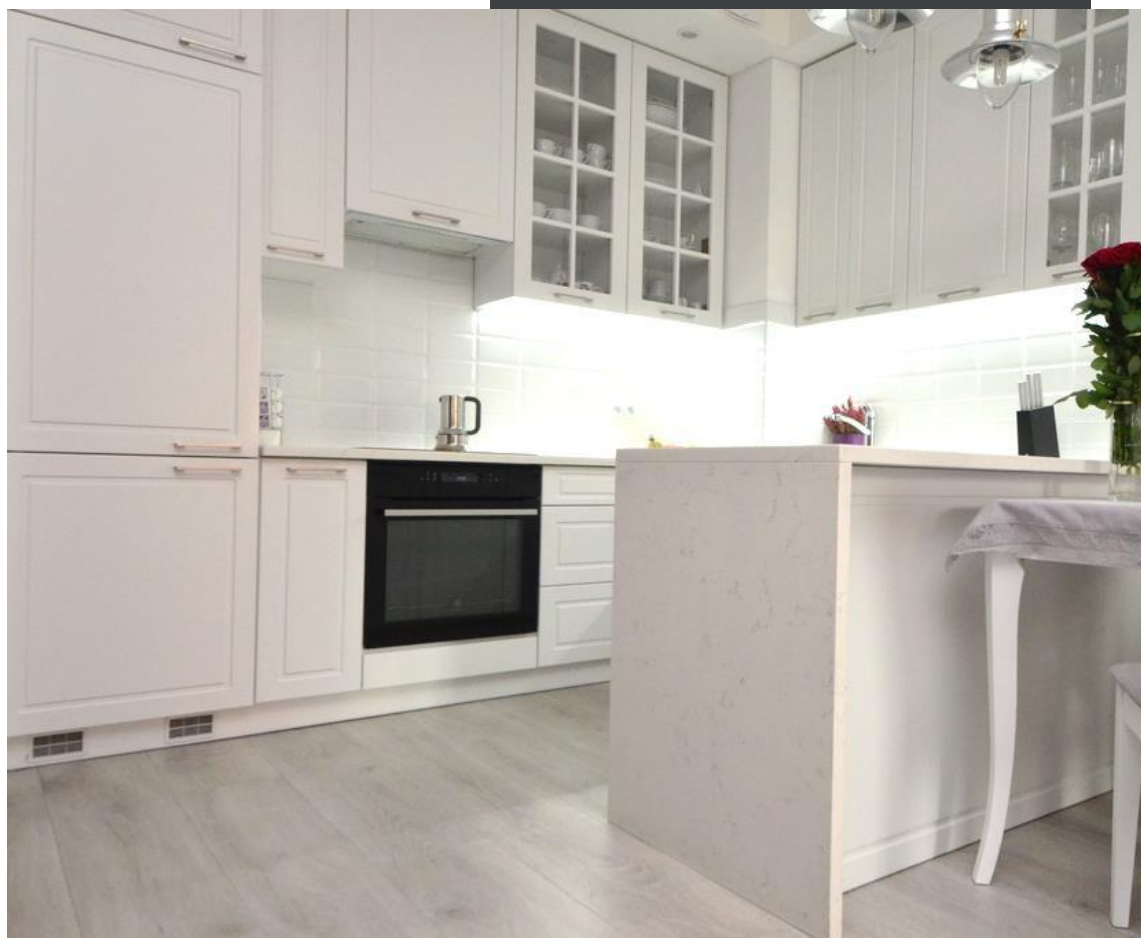


Warszawa, Śródmieście

XXXXXX **59 m²**

59 | 2 | 3
метрів | кімнати | Поверх

Ціна **3 300 PLN**
ціна за m² **56 PLN**



XXXX XXXXXXXXXX:

Stylish 1-bedroom apartment in the heart of Powiśle – 3 steps from the city center. Located in a residential building with an elevator and reception.

POWIŚLE | SOLEC | 59 M2 | 1 BEDROOM APARTMENT | LOCATION CELL | FULLY EQUIPPED | 3RD FLOOR

APARTMENT DESCRIPTION: A 1-bedroom, stylish apartment for rent on the third floor in a building from 2005, located in the heart of Warsaw in Powiśle at ul. Solec. The building has elevators, reception and security.

- A spacious living room with a sofa and a 42-inch TV with a kitchenette (equipped with household appliances)
- Large bedroom with a double bed
- Wardrobe
- Modern bathroom with a bathtub
- Storage room (7 square meters), with an additional refrigerator. The cell phone is located opposite the door to the apartment. Very functional and comfortable due to its proximity to the apartment. Additionally, the equipment includes: a vacuum cleaner, an iron, an ironing board, an electric kettle and necessary kitchen accessories.

FEES: Rent: PLN 3,300 / month

Administrative rent, heating and water advances – approx. PLN 1,300 / month (paid by the tenant). Storage room included in the price.

The tenant pays for electricity according to consumption and any underpayments resulting from water and heating consumption (settled once a year based on settlements with the administration). Deposit PLN 4,500

LOCATION: The apartment is located in the most popular district of the city – Powiśle, at Solec Street. Close to the city center, close to extensive green areas, within walking distance to the Vistula boulevards. Perfect for anyone who appreciates the unique location of Powiśle and its unique atmosphere. The area is dominated by low, historic buildings. There are a lot of green areas around: Rydz-Śmigły Park in the immediate vicinity, 10 minutes on foot to Agrykole, 15 minutes to Łazienki Królewskie, 5 minutes to Vistula Boulevards, tram 5 minutes to the Poniatowskiego Bridge stop, metro 7 minutes to Copernicus Science Center Station. The nearest grocery store (Carrefour) is 2 minutes on foot, on the other side of the street there is a fruit and vegetable stall and a Hebe drugstore. Great infrastructure, large selection of shops, schools and kindergartens. The Warsaw Sports and Recreation Center is located 2 minutes from the building. Over the last few years, Powiśle, and especially Solec, has become a very popular part of Warsaw with numerous restaurants, bars and cafes.

As a real estate agency, we charge commission for the agency service. This announcement is for information purposes only and does not constitute an offer within the meaning of Art. 66 § 1 of the Civil Code.

XX XXXXXXXXXXXX X XXXXX XX'XXXX XXXXXXXX

XX'XXXXXXXX X XXXX, XXX XXXXXXXXXXXX XX XXXXXXXX.

XXXXXXXXXXXX XXX

+48 537 500 745

XXXXXXXXXX XXXXXXX

biuro@warsawproperties.pl