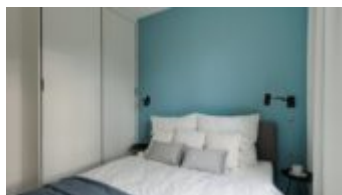
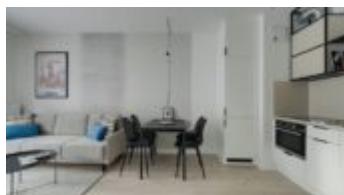
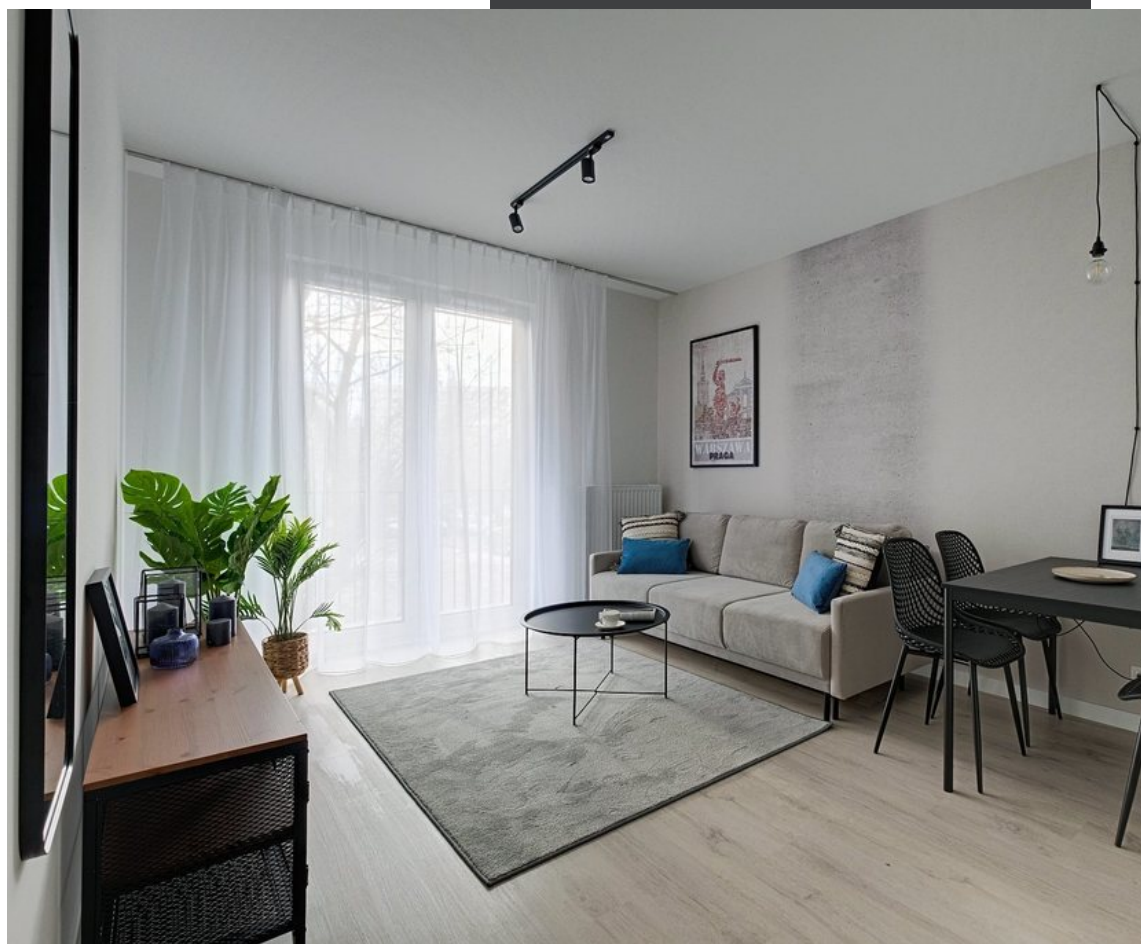


Warszawa, Praga-Północ

XXXXXX **36 m²**

36 метрів | 2 кімнати | 3 підлога

Ціна **3 185 PLN**
ціна за м² **83 PLN**





APARTMENT AVAILABLE call and arrange a viewing!

For rent a quiet, comfortable 1-bedroom apartment – living room with kitchenette + bedroom, with an area of 36 m, located in a new building on Radzywińska Street, in a quiet, green area in Old Praga. Internet included in the rental price!

RADZYMIŃSKA | SZMULOWIZNA – OLD PRAGA | NEW 1-BEDROOMM APARTMENT WITH BALCONY – 3.24 M | 1ST FLOOR WITH SOUTH VIEW ON THE SQUARE | BEDROOM WITH BED 160X200 | EQUIPMENT – NEW FURNITURE AND HOUSEHOLD APPLIANCES | 36 M

BUILDING: The new LA PRAGA building, at Radzywińska Street 30, is an elegant tenement house surrounded by greenery. Inside, a carefully planned green courtyard, around which there are numerous squares with playgrounds and an outdoor gym. The building is equipped with elevators and an underground car park, the whole is fenced, monitored, with 24-hour security. Around it are housing estates and the historic buildings of Old Praga. Nearby there is a Żabka market, bistro, playground, kindergarten and public transport (bus, tram). Residents benefit from the care of a professional leasing office and property manager. Ask about other apartments available in this building!

APARTMENT DESCRIPTION: Comfortable 1-bedroom apartment in a new building located on the 3rd floor with a balcony of 3.24 m, with a south view

- Living room – comfortable, fold-out sofa, table + chairs, TV cabinet, curtains – with access to the loggia
- Separate bedroom – bed with mattress (160 cm x 200 cm), bedside tables, large wardrobe, curtains
- Kitchen in the form of an annex – dishwasher, oven, induction hob, fridge, washing machine
- Bathroom with shower
- There is a wardrobe in the hall
- Comfortable loggia balcony – 3.24 m

Large windows provide natural light and good interior lighting, and the living room has access to the balcony.

FEES: Rent – PLN 3,185.00 / month + administrative fee – PLN 462 / month + advance payments for utilities (water, heating, garbage collection) – PLN 284 / month,

The rental price includes Internet 500/100 Mbps

TOTAL: 3931 PLN

Optional: parking space in the garage, storage room.

The tenant additionally pays for electricity according to consumption and excess consumption of utilities.

Refundable deposit: PLN 3931

SURROUNDING AREA: LA PRAGA is a modern investment located at Radzywińska Street, in the Praga district – in the quiet Szmulowizny housing estate. Within walking distance of numerous shopping and entertainment centers – Centrum Koneser and Galeria Wileńska. Around the estate there is a perfectly developed urban infrastructure: numerous educational, administrative and medical facilities, shops, markets, shopping malls, sports and recreation centers, which significantly facilitate everyday functioning.

TRANSPORT: bus stop by the building, tram lines nearby. Szwedzka metro station – 12 minutes walk.
Bicycle paths marked on Radzymińska Street. Close to Warszawa Wschodnia PKP station.

Wszystkie dane mają charakter poglądowy i nie należy do nich traktować jako oferty. Wynajem na podstawie umowy o dzieło.

Wszystkie dane mają charakter poglądowy i nie należy do nich traktować jako oferty. Wynajem na podstawie umowy o dzieło.

Wszystkie dane mają charakter poglądowy i nie należy do nich traktować jako oferty. Wynajem na podstawie umowy o dzieło.

+48 22 838 24 71

Wszystkie dane mają charakter poglądowy i nie należy do nich traktować jako oferty. Wynajem na podstawie umowy o dzieło.

biuro@warsawproperties.pl