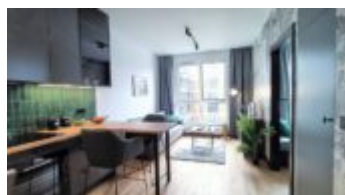


Warszawa, Mokotów

XXXXXX **34 m²**

34 метрів | 2 кімнати | 5 Поверх

Ціна **4 000 PLN**
ціна за м² **116 PLN**





NEW LOFT APARTMENT | SEPARATE BEDROOM | STYLISH, COMFORTABLE FURNISHINGS | NEW ESTATE |
DOMANIEWSKA – SŁUŻEWIEC | FULLY EQUIPPED

LOCATION: Warsaw, Mokotów, Służewiec, Domaniewska Street – surrounded by the Służewiec office center. Close to public transport – trams, buses, metro, suburban railway. Close to Okęcie Airport.

NEW, MODERN ESTATE – CENTRAL HOUSE – an elegant development in the heart of the Służewiec office center. The development offers recreational space: a residents' club with meeting space, fitness center, and sauna, an internal green patio with space for children and adults, and a public terrace of approximately 220 square meters on the building's roof. This investment is from the renowned developer OKAM.

Within the estate: a representative reception, commercial and service premises on the ground floor, a playground, a garden and a relaxation zone in two courtyards, parcel machines for the exclusive use of residents.

APARTMENT DESCRIPTION: Stylish, functional apartment, decorated in LOFT style with a separate bedroom, located on the 5th floor, with large windows (overlooking the inner areas of the estate), in a new building with elevators, a green patio and underground parking.

This modern apartment is functionally designed and crafted from carefully selected materials. You'll find everything you need for everyday living, including a fully equipped kitchenette, a comfortable bedroom, and a cozy bathroom with a washing machine.

- Kitchen: induction hob, oven, fridge with freezer, dishwasher, high stools
- Living room: sofa, coffee table, TV cabinet
- Bedroom: double bed, spacious wardrobe
- Bathroom: large shower, sink, toilet, washing machine

Rent: PLN 4,000 / month.

Administrative fees – approx. PLN 650/month.

The tenant pays for electricity according to consumption.

Deposit: PLN 4,650.

For tenants: storage unit: PLN 100/month

As a real estate agency, we charge commission for our brokerage services. This announcement is for information purposes only and does not constitute an offer within the meaning of Article 66 § 1 of the Civil Code.

SURROUNDINGS: The Central House development is located in Warsaw's Służewiec district,

surrounded by an office center on Domaniewska Street. It is surrounded by numerous corporate headquarters and the large Luxmed medical center. The Galeria Mokotów shopping and entertainment center is within walking distance.

TRANSPORT: Numerous tram and bus lines are nearby. The Warszawa Służewiec train station is close by. The area is well-connected to the city center, other districts, and the ring road.

Wszystkie dane mają charakter poglądowy i nie należy do nich traktować jako oferty. Wynajem na podstawie umowy o dzieło. Wynajem na podstawie umowy o dzieło. Wynajem na podstawie umowy o dzieło.

Wszystkie dane mają charakter poglądowy i nie należy do nich traktować jako oferty. Wynajem na podstawie umowy o dzieło. Wynajem na podstawie umowy o dzieło. Wynajem na podstawie umowy o dzieło.

+48 537 500 745

Wszystkie dane mają charakter poglądowy i nie należy do nich traktować jako oferty. Wynajem na podstawie umowy o dzieło. Wynajem na podstawie umowy o dzieło. Wynajem na podstawie umowy o dzieło.

biuro@warsawproperties.pl