

Warszawa, Praga-Północ

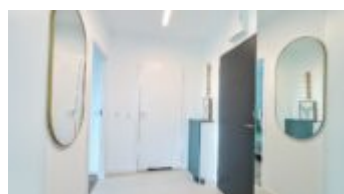
Apartment 52 m²

52
רטמ

3
ה'גוקופ

5
קמזק

4 500 PLN
בתיים
87 m² אז הניס





Description

NEW 2-BEDROOM APARTMENT WITH A BALCONY | BOHEMA | SZWEDZKA METRO STATION | NEW ESTATE | VIEW OUTSIDE THE ESTATE

A 2-bedroom apartment for rent in the new BOHEMA housing estate

APARTMENT DESCRIPTION: The apartment is located on the 5th floor of a new building (2nd line from Szwedzka Street). It is bright and quiet. The windows face east to the area around the estate. The apartment is a corner and has a lot of windows.

- a living room with a kitchenette with 4 windows and a balcony – equipped with a large comfortable sofa (fold-out), TV cabinet and coffee table
- a modern, fully equipped kitchenette (dishwasher, oven, induction hob, fridge, freezer) – and a folding table and 3 chairs
- a bedroom with a window – equipped with a large bed with a container (150 cm) and a large wardrobe
- the second, smaller bedroom – equipped with a single bed and a wardrobe
- a comfortable bathroom with a bathtub and a washing machine
- hall with wardrobe and shoe cabinet
- a large, quiet balcony (entrance from the living room and bedroom)

The rental price is PLN 4500/month. Administrative fees with advance payments for utilities (water, heating, garbage disposal): approx. PLN 672

The tenant pays for electricity according to consumption. Parking space in the underground garage: PLN 200 / month.

Deposit: PLN 5,200

The tenant pays electricity according to consumption and any underpayments resulting from water and heating consumption (settled once a year on the basis of settlements with the administration).

As a real estate agency, we charge remuneration in the form of a commission for the brokerage service. This announcement is for information only and does not constitute an offer within the meaning of Art. 66 § 1 of the Civil Code.

BUILDING; A new building, put into use in 2021, in the Bohema housing estate – Strefa Praga. Equipped with modern elevators and underground parking.

Around the building, a modern housing estate, lots of greenery, a playground for children. There is no car traffic in the estate (underground car parks have access straight from the street), which affects the safety of residents and acoustic comfort in the apartments.

BOHEMA – Strefa Praga is a unique urban project that is part of the revitalization program of Warsaw's Praga district. It is built on the premises of the 19th-century Pollena cosmetics factory at Szwedzka Street. Here, residential, commercial, office and cultural space interpenetrate, creating a new quality of life.

Residents will find here a lot of amenities and attractions that will add color to everyday life. Residential buildings, offices, shops, cafes, service and entertainment outlets are being built on an area of over four hectares, and the 19th-century factory building will gain a new life. It will be a publicly accessible space for artistic activity, such as concerts, performances and an open-air cinema. Numerous squares of various character, a wide shopping avenue and a vast area around the chimney will soon fill this place with crowds.

TRANSPORT: There is a new SZWEDZKA metro station and bus stops next to the estate. Around the city's main communication arteries – Al. Solidarności, Junction Żaba – provide quick access to many districts of the city.

You are interested in this property
contact us and make an appointment.

Call us

+48 537 500 745

Send message

info@warsawproperties.pl