

Warszawa, Bemowo

## Apartment 68 m<sup>2</sup>

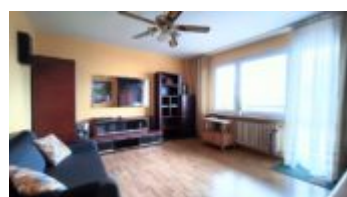
68  
רמ

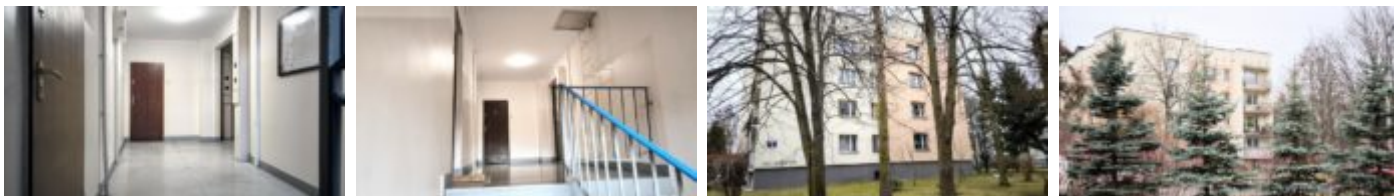
3  
ה'גוקופ

3  
קמולק

Sale

בתיים **890 000 PLN**  
מ<sup>2</sup> 12 959 PLN





## Description

BEMOWO | NICE 3-ROOM APARTMENT – BRIGHT AND QUIET | LOW BLOCK | FULL OWNERSHIP

The building is managed by a housing community.

APARTMENT DESCRIPTION: 3-room apartment with an area of 68.68 m<sup>2</sup>, located in a quiet part of the Warsaw Bemowo Lotnisko district at ul. Dinarica. The premises are located on the 3rd floor (top) in a 4-story building. The condition of the premises is good, renovation of the sanitary facilities, bathroom and kitchen is required.

- 3 independent rooms with entrances from a large hall
- separate bright kitchen with a window
- bathroom with a bathtub
- separate toilet
- large hall
- large loggia balcony

Two-sided apartment – north-east window direction E

Electrical installation of the premises after modernization in 2001. Risers water and CO replaced.

Panels on the floors. The bathroom and toilet have terracotta from the years of construction and are in good condition. Entrance door from the construction period. Plastic windows from 2001, in good condition. In the living room, there is access to a large balcony (lodge), approx. 4.26 m long, 1.33 m wide, with terracotta on the floor in good condition. ROOMS: living room 19 m, kitchen 6.5 m, 2 bedrooms approx. 11 m each, large hall approx. 13.2 m, separate toilet 2.6 m, large bathroom with a 170 cm bathtub. Possibility of connecting optical fiber, high-speed Internet and TV to the premises. The apartment includes a utility room with an area of approx. 4.45 m<sup>2</sup> (basement) and a place in the common part of the building for bicycles (locked).

Administrative rent: PLN 963.50 The apartment is a separate property with land and mortgage register.

BUILDING: a low block (3-story) surrounded by greenery, built in 1983. The building has a quiet neighborhood – only 16 apartments. The building is in very good technical condition, managed by the Community – insulated, staircase renovated in 2017, dry basements. On the basement level, central heating and toilet risers and levels, WZ. Solar panels installed on the roof in 2023, connected to a modernized heating plant. No elevator. Entry phone. Direct access to the building, parking available in front of the building on the road or in a fenced community parking lot approximately 1 minute from the building exit. In front of the building there is a green area with a beautiful maple tree, which can be seen from the balcony. The area around the building is wooded and fenced, available to residents.

IN THE AREA: Nowa Primary School – 1 minute walk, bazaar in Bemowo – 4 minutes, bus and tram stop 4 minutes, metro M2 – Ratusz Bemowo station – 4 tram or bus stops. Bemowo Shopping Center – 2 stops by tram or bus. WAT – 15 minutes walk, 8 minutes by car, Puszcza Kampinowska 15 minutes by

car, Bemowo Forest – 15 minutes by bike. No paid parking zone.

---

**You are interested in this property**  
contact us and make an appointment.

**Call us**

**+48 537 500 745**

**Send message**

**[info@warsawproperties.pl](mailto:info@warsawproperties.pl)**