

Łódź, Łódź-Górna

Apartment 26 m²

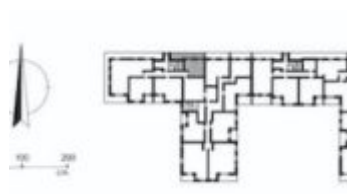
26
רמ

1
ה'גוקופ

4
קמזק

Sale

בתיים 240 700 PLN
מ² 8 951 PLN



Description

LOCATION: Łódź Górna – Rokicie, Aleja Politechniki / Felsztyńskiego, exceptionally green location just 4 km from the center of Łódź.

MODERN BUILDING – The Rejtana Park investment is a place for people who appreciate a high standard of construction, proximity to the city center and good communication, but above all beautiful green areas literally within easy reach. Residents have at their disposal a garden in the inner courtyard of the building and a direct exit to Rejtana Park through a beautiful, historic red brick gate, which is a characteristic point on the map of Łódź.

As part of the investment, 125 apartments will be built, planned on 8 floors from the Rejtana Park side and on 4 floors from the side of Felsztyńskiego Street.

APARTMENT DESCRIPTION: A 1-room apartment with an area of 26.89 m², located on the 4th floor of a

new building and consists of the following rooms:

- a living room with a kitchenette with an area of 18.77 m²,
- hall with a space for a wardrobe, 3.04 m²,
- bathroom with an area of 5.08 m²,
- a very spacious 18.82 m² terrace.

An apartment in a developer standard – perfect for investment !

The location of the windows and the terrace – to the north.

Obligatory purchase of a parking space and a storage room for a total price of PLN 41,000.

SALE: in the form of an assignment of a development contract.

Currently, the building is under construction and the planned date of commissioning is June 2023.

As a real estate agency, we charge a commission for the brokerage service. This announcement is for information purposes only and does not constitute an offer within the meaning of Art. 66 § 1 of the Civil Code.

NEIGHBORHOOD: Future residents of the Rejtana Park investment can use the extensive network of transport connections. At a distance of 110 meters from the Rejtana Park investment, there is the nearest communication point – Politechniki – Skrzywana. Numerous service points within walking distance.

In the vicinity of the investment, there are shops Lidl (450 m), Biedronka (600 m), Żabka (800 m), Aldi (1 km); within a radius of 200 m to 1 km there are service points, a veterinary clinic, public playgrounds, beauty salons, car workshops and gas stations, churches, a number of official institutions, municipal parks of Rejtana and Słowackiego, various restaurants, postal and banking centers, general stores. The Pasaż Łódzki shopping center and the campus of the Łódź University of Technology are located 1.7 km from the investment.

You are interested in this property
contact us and make an appointment.

Call us
+48 537 500 745

Send message
info@warsawproperties.pl