

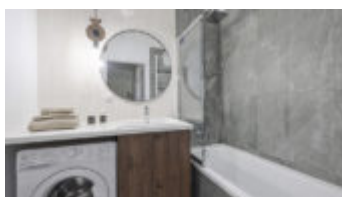
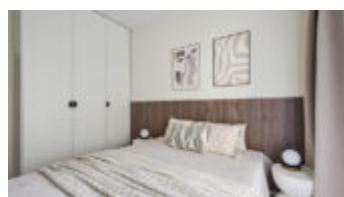
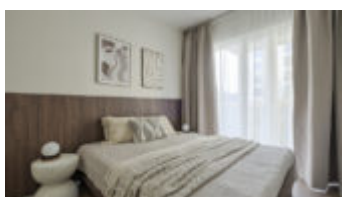
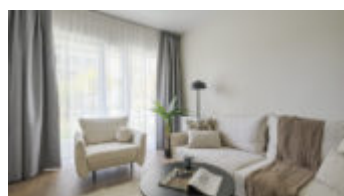
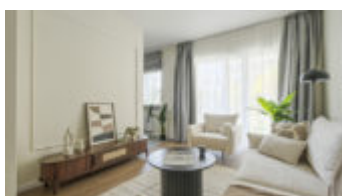
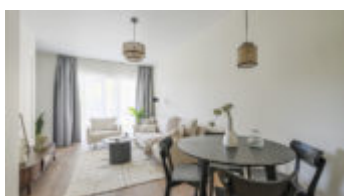
Warszawa, Wola

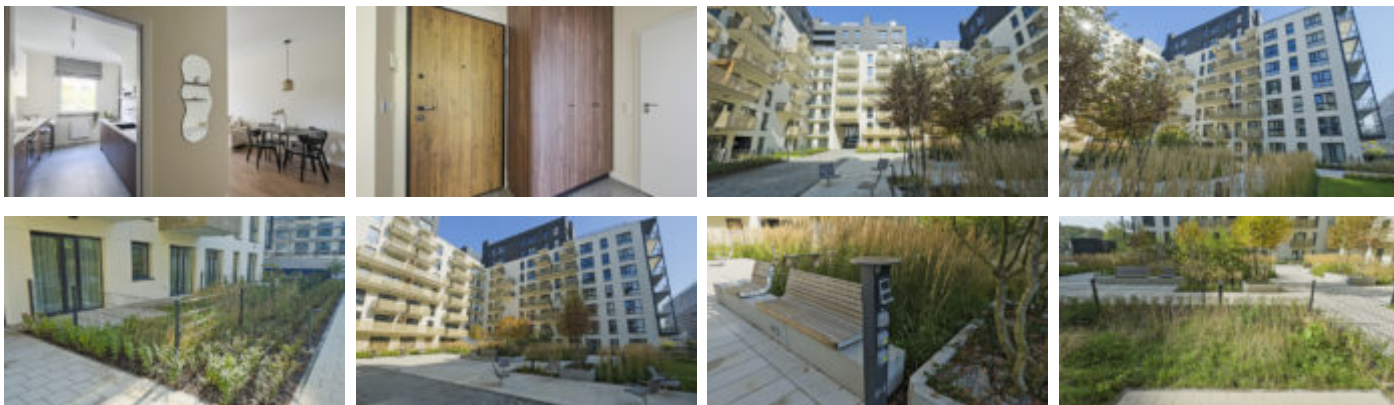
Apartment 54 m²

54 meters | 2 rooms | 0 floor

Rent

Price **3 400 PLN**
price for m² **63 PLN**





Description:

Brand new, stylish 2-room apartment with a terrace and garden, fully equipped in the new CITY FLOW building in Warsaw's Wola district – Redutowa Street

WOLA – REDUTOWA Street | NEW CITY FLOW ESTATE, BUILDINGS WITH LIFTS | COMPLETELY NEW APARTMENT WITH A BEDROOM | NEW FURNISHINGS | TERRACE AND GARDEN | GROUND FLOOR | VIEW OF THE ESTATE

APARTMENT DESCRIPTION: A brand new, large 2-room apartment with a separate, bright kitchen, located on the ground floor, with large windows (overlooking the inner areas of the estate), in a new building with elevators, a green patio and underground parking.

Beautifully designed **in the fashionable Modern Organic style**, this apartment is thoughtfully crafted from carefully selected materials. The apartment features all the essentials for everyday living:

a separate, large kitchen with a window, a charming living room with a dining area, a separate bedroom, and a comfortable bathroom with a washing machine.

– **Large kitchen with a window:** induction hob, oven, fridge with freezer, dishwasher, table and chairs

– **Living room** : fold-out sofa, coffee table, TV stand, table with chairs, numerous shelves and cabinets

– **Separate bedroom:** double bed with mattress (160×200 cm), bedside tables, large wardrobe

– **Bathroom:** bathtub with shower set, sink, toilet, washing machine

– **Hallway** : large wardrobe

For the tenant: **parking space (PLN 200/month) and storage unit (PLN 100/month)**

FEES: Rent: PLN 3,400/month. Administrative fees: PLN 958/month. Tenant pays electricity based on consumption.

Additionally: parking space (PLN 200/month) and storage unit (PLN 100/month)

Deposit: PLN 3,400.

As a real estate agency, we charge commission for our brokerage services. This announcement is for information purposes only and does not constitute an offer within the meaning of Article 66 § 1 of the Civil Code.

ABOUT THE ESTATE: A modern development, CITYFLOW, is being built on Redutowa Street in Warsaw. Residents will find peace and a wide variety of outdoor activities, while remaining in the heart of the capital's action. All this is surrounded by greenery – nearly 40% of the development is biologically active.

In the vicinity of the estate – public transport stops, kindergartens, schools, shops, restaurants, bars, banks and many other service points make life easier and save time.

An internal, green, central park will run through the center of the development, on an east-west axis.

On the west side, a so-called activity, relaxation, and meeting zone will be created – for the exclusive use of residents. This zone will provide a wealth of exciting outdoor activities, including a children's playground, a relaxation area with loungers and hammocks, an amphitheater, a water mist area, and a dog recreation area.

You are interested in this property
contact us and make an appointment.

Call us

+48 537 500 745

Send message

info@warsawproperties.pl