

Warszawa, Ursynów

Apartment 41 m²

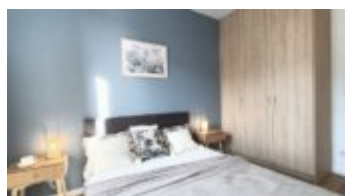
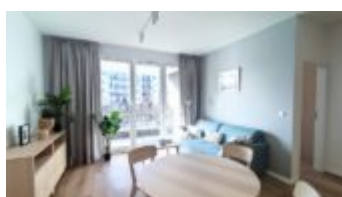
41
meters

2
rooms

1
floor

Rent

Price **3 100 PLN**
price for m² **76 PLN**





Description:

A new, 1-bedroom apartment in a green, quiet housing estate, at the junction of Służewiec and Ursynów.

The apartment is COMPLETELY new – waiting for its first tenant.

NEW ESTATE | SŁUŻEWIEC – GÓRNY MOKOTÓW | 41.16m | 2 ROOMS + LOGGIA WITH A LAKE VIEW | PARKING SPACE + STORAGE STORAGE | FULLY EQUIPPED | 1ST FLOOR

BUILDING AND ESTATE: A new apartment building in the Harmony Park estate, built around a private lake. Around the lake there are recreational areas, playgrounds and beautiful, well-kept greenery. New housing estates around, quiet neighborhood.

The estate consists of residential buildings with a cascade layout and a height of 2 to 7 floors. The buildings are of a modern design, simple form, bright colors, with green roofs and floor-length windows. The estate area is closed to vehicle traffic and covered by 24-hour security and monitoring. Residents have at their disposal a kindergarten, playgrounds for children, a multi-purpose sports field, an ice rink, well-kept green areas with a lake, walking paths, rest areas, barbecue areas, a city bike rental station, and parking spaces in the underground parking lot. The buildings have reception desks, commercial and service points, and silent elevators.

APARTMENT DESCRIPTION: Stylish apartment located on the 1st floor with a large loggia balcony, in a new building. The apartment is completely new – all furniture and household appliances are new. Finished and equipped in a fashionable BOHO style.

The apartment is bright and quiet, with a nice view from the windows of the internal lake and recreational areas.

- Bright living room with a large balcony window and access to the balcony, equipped with a sofa (fold-out)
- Kitchenette with a dining area with a round table and chairs – fully equipped (furniture, large fridge, dishwasher, oven)
- Separate bedroom – with a double bed, bedside tables and a large wardrobe
- Comfortable bathroom with a large shower cabin and a washing machine
- Large loggia overlooking the estate and the lake

OPTIONAL: storage room for PLN 100/month.

Rent: PLN 3,100 / month + parking space in the underground garage for PLN 150 / month.

Administrative rent, heating and water advances – PLN 780 / month (paid by the tenant).

The tenant pays for electricity according to consumption and any underpayments resulting from water and heating consumption (settled once a year based on settlements with the administration).

Deposit PLN 3,800

As a real estate agency, we charge fees for the agency service in the form of commission. This announcement is for information purposes only and does not constitute an offer within the meaning of Art. 66 § 1 of the Civil Code.

AREA: The Harmony Park estate is located in the Wyczółki estate, at the junction of Ursynów and Służewiec. Located at Złoty Potok and Pieskowa Skała streets, near Kłobucka street.

Location near the Okęcie airport and the Horse Racing area. The Służewiec office center is 1.8 km away. There are new housing estates, numerous shops and service premises around.

COMMUNICATION: City bus stop at Kłobucka Street (line 165).

You are interested in this property

contact us and make an appointment.

Call us

+48 537 500 745

Send message

info@warsawproperties.pl