

Warszawa, Śródmieście

Apartment 42 m²

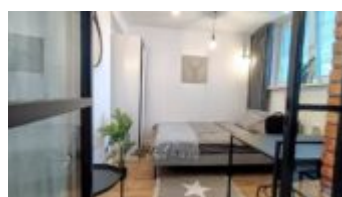
42
meters

3
rooms

3
floor

Rent

Price **4 500 PLN**
price for m² **107 PLN**





Description:

AIR-CONDITIONED 2 bedroom apartment, fully equipped with a parking space (behind a barrier). A stylish apartment in the most popular district of Powiśle, a step from the Copernicus Science Center and the Vistula Boulevards. Located on the 3rd floor in a discreet building (no elevator).

POWIŚLE | NEXT TO THE COPERNICUS CENTER AND THE VISTULA BOULEVARDS | 5 MINUTES TO THE METRO | AFTER RENOVATION | AIR CONDITIONING | PERFECTLY DESIGNED APARTMENT | 42 M2 | BALCONY | NEXT TO THE UNIVERSITY LIBRARY | GREAT COMMUNICATION POINT

The apartment is available from May 15, viewing possible after prior arrangement.

BUILDING; The apartment is located on the 3rd floor (without elevator) in a residential building at ul. Leszczyńska near Dobra Street, in the most fashionable district of Warsaw, Powiśle. Next to it is the fashionable shopping and catering center Elektrownia Powiśle, the University Library, the Copernicus Science Center, and popular recreational areas: boulevards, parks and squares. There is a parking space in the inner yard (accessible by code). Gated estate. There is no elevator in the building.

LOCATION; The building is located at ul. Leszczyńska, between Dobra and Browarna streets. Around it is the most popular district with cafes, restaurants and boutiques. A short walk to the Vistula boulevards and numerous parks: Kazimierzowski Park, University Library Garden, Jankowski Square, within walking distance of Mariensztat, the Old Town, the Royal Route. Next to it are the buildings of the University of Warsaw

APARTMENT DESCRIPTION: An intimate, perfectly designed and made of high-quality materials, 2 bedroom apartment with a loggia balcony.

AIR-CONDITIONED apartment, freshly finished according to the architect's design. Refined in every detail.

– living room connected to a kitchenette with a dining corner, with access to the balcony. Southern exposure – with a view of the greenery and the school playground

Fully equipped kitchenette: fridge, dishwasher, kitchen utensils, cutlery, kettle, coffee maker.

There is a modern TV in the living room.

– bedroom with a double bed with a mattress (160 cm), a wardrobe and a desk. New bedding, duvets and pillows in the bedroom.

– second bedroom with a single bed, wardrobe, desk and bookcase

– bathroom with shower with washer and dryer (equipped with towels)

– hall with a large wardrobe

The apartment is fully ready to move in. New furniture, new household appliances, kitchen equipment.

For tenants' use: basement (bicycle storage possible)

Parking space in the inner yard (behind a remote-controlled gate) – PLN 430/month

Rental price: PLN 4,500/month.

Administrative rent: approx. PLN 790

Additionally paid electricity – billed according to consumption.

Deposit: PLN 5,500. Lease for min. 12 months.

COMMUNICATION: Next to the city bus stop, 5 minutes' walk to the metro, Centrum Kopernik stop.

Close to Wisłostrada – one of the main arteries of the city.

As a real estate agency, we charge fees for the agency service in the form of commission. This announcement is for information purposes only and does not constitute an offer within the meaning of Art. 66 § 1 of the Civil Code

You are interested in this property

contact us and make an appointment.

Call us

+48 537 500 745

Send message

info@warsawproperties.pl