

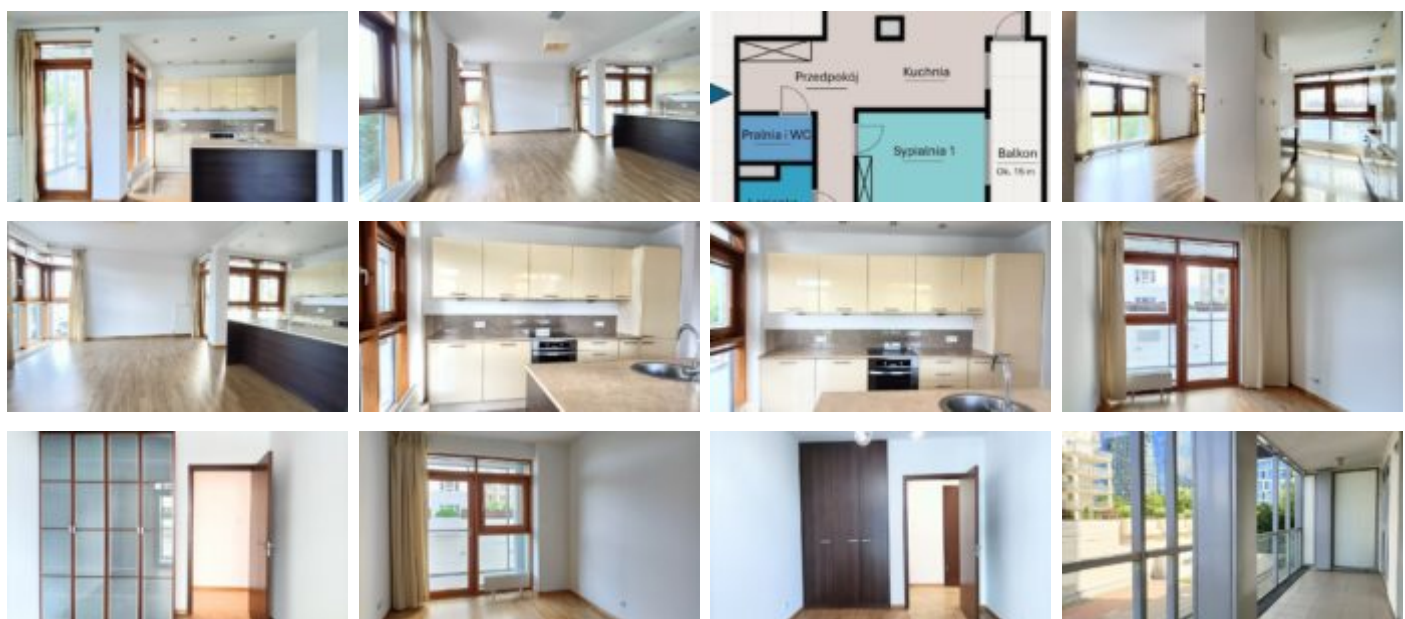
Warszawa, Śródmieście

Apartment 86 m²

86 meters | 3 rooms | 1 floor

Sale

Price **1 600 000 PLN**
price for m² **18 514 PLN**





Description:

Bright, spacious, elegantly finished 2-bedroom apartment, Śródmieście, right next to the Gdańska metro station.

ŚRÓDMIEŚCIE | METRO GDAŃSKA | 86.42 m | SŁOMIŃSKIEGO | 3 ROOMS | LARGE BALCONY – approx. 15 m | 1ST FLOOR

BUILDING: The modern and prestigious GDAŃSKI Apartment Building is located right next to the Warszawa – Gdańska metro station. Śródmieście, Muranów, Słomińskiego Street. The building has high-speed elevators, reception and 24-hour security. The estate is fenced and guarded. On the ground floor there are shops and a bakery. At the back of the building there is a walking passage with a playground and an outdoor gym.

APARTMENT DESCRIPTION: Bright, spacious 2-bedroom apartment, located on the 1st floor in a 16-story building.

- spacious living room with lots of windows, with a view on 2 sides, with an exit to a large balcony. The windows in the living room face north – with a view of the vast areas of Żoliborz.
- fully equipped, bright kitchenette, with an island, with granite countertops (with a window)
- 2 separate bedrooms, with large windows and balconies, both with access to the balcony, equipped with large wardrobes. The windows of both bedrooms face east.
- bathroom with a bathtub
- toilet with a separate utility room (with a washing machine)
- a large wardrobe in the hall
- a large, covered balcony with a view of the surrounding, modern buildings – about 15 m of additional space
- large windows in wooden joinery, with a view on 2 sides (east / north), provide the rooms with optimal lighting.

On the floor there is natural wooden parquet and natural stone slabs. Carefully designed lighting. The apartment includes a parking space in the underground garage – additionally payable PLN 60,000.

The apartment is fully owned with a land and mortgage register.

As a real estate agency, we charge a commission for the brokerage service. This announcement is for information purposes only and does not constitute an offer within the meaning of Article 66 § 1 of the Civil Code.

SURROUNDING AREA: Nearby is the perfectly organized Śródmieście Południowe district. Nearby is an office center and numerous shops, service premises, gyms, an indoor swimming pool (at Inflancka Street), pharmacies, schools, post office, medical clinics. In the immediate vicinity: Arkadia Shopping Center, Traugutta Park and green areas of Muranów parks. Close to the city center and the historic part of the Old and New Town.

TRANSPORT: Ideal location in terms of communication – right next to the building is the Dworzec Gdański metro station and numerous tram and bus stops. Nearby are the city's main communication arteries.

You are interested in this property

contact us and make an appointment.

Call us

+48 537 500 745

Send message

info@warsawproperties.pl