

Warszawa, Wola

Wohnung 30 m²

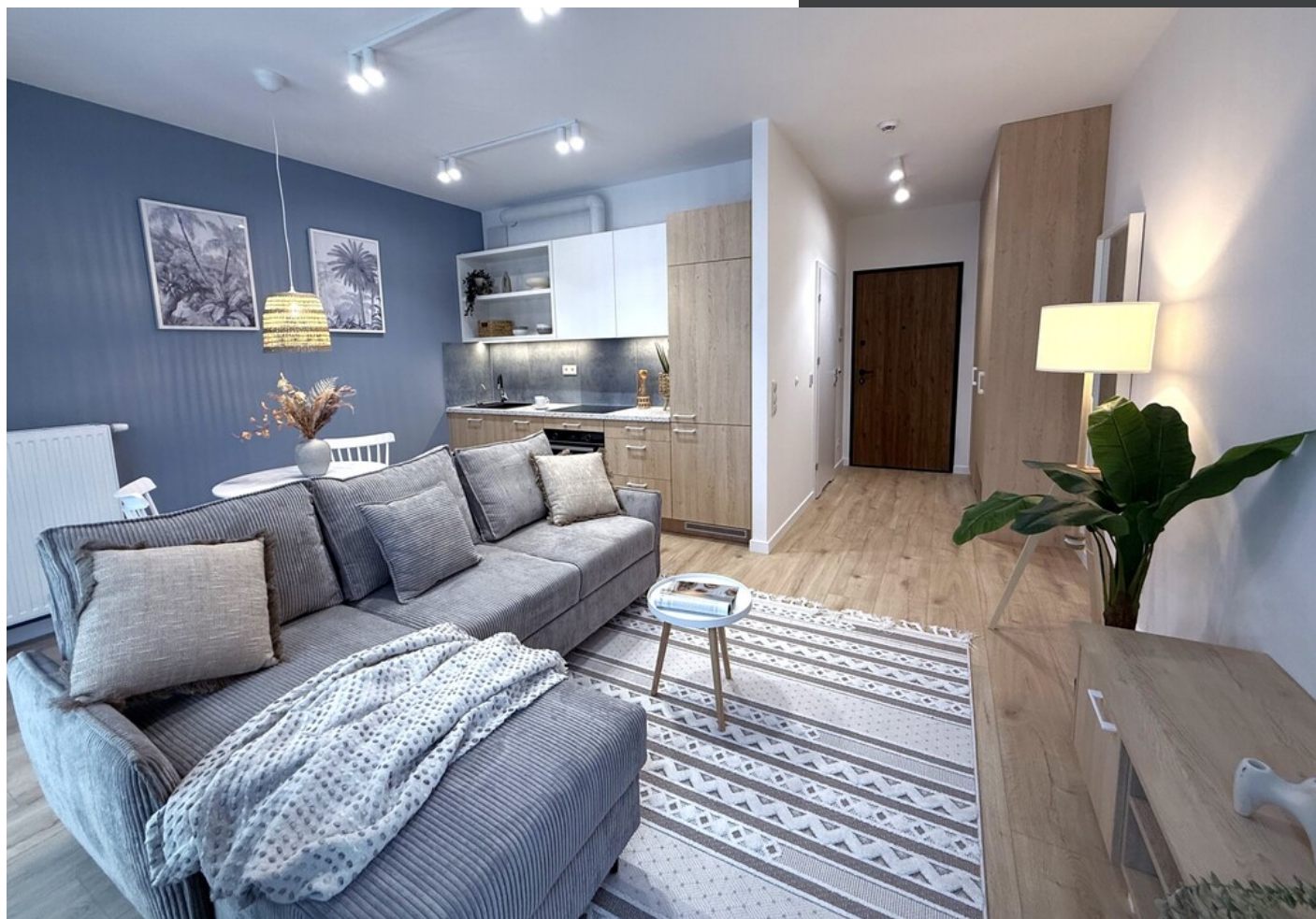
30
meter

1
zimmer

2
Etage

Vermietung

Preis **2 800 PLN**
preis pro m² **93 PLN**





Angebotsbeschreibung:

A brand new, fully equipped studio in the new CITY FLOW building in Warsaw's Wola district – Redutowa Street

WOLA – REDUTOWA Street | NEW APARTMENT BUILDING WITH ELEVATOR | COMPLETELY NEW STUDIO | NEW FURNISHINGS | BALCONY | 2ND FLOOR | VIEW OF THE ESTATE

APARTMENT DESCRIPTION: Brand new studio apartment, located on the 2nd floor, with large windows (overlooking the inner areas of the estate), in a new building with elevators, a green patio and underground parking.

This modern apartment is functionally designed and crafted from carefully selected materials. The apartment features everything you need for everyday living, including a fully equipped kitchenette, a large corner sofa bed, and a comfortable bathroom with a washing machine.

- Kitchen: induction hob, oven, fridge with freezer, dishwasher, table and chairs
- Room: fold-out sofa, coffee table, TV cabinet
- Bathroom: large shower, sink, toilet, washer-dryer
- Hallway: large wardrobe

For the tenant: parking space (PLN 200/month) and storage unit (PLN 100/month)

FEES: Rent: PLN 2,800/month. Administrative fees: PLN 787/month. Tenant pays electricity based on consumption.

Additionally: parking space (PLN 200/month) and storage unit (PLN 100/month)

Deposit: PLN 3,500.

As a real estate agency, we charge commission for our brokerage services. This announcement is for information purposes only and does not constitute an offer within the meaning of Article 66 § 1 of the Civil Code.

ABOUT THE ESTATE: A modern development, CITYFLOW, is being built on Redutowa Street in Warsaw. Residents will find peace and a wide variety of outdoor activities, while remaining in the heart of the capital's action. All this is surrounded by greenery – nearly 40% of the development is biologically active.

In the vicinity of the estate – public transport stops, kindergartens, schools, shops, restaurants, bars, banks and many other service points make life easier and save time.

An internal, green, central park will run through the center of the development, on an east-west axis. On the west side, a so-called activity, relaxation, and meeting zone will be created – for the exclusive use of residents. This zone will provide a wealth of exciting outdoor activities, including a children's

playground, a relaxation area with loungers and hammocks, an amphitheater, a water mist area, and a dog recreation area.

Du bist an dieser Immobilie interessiert
kontaktiere uns für einen Termin.

Ruf uns an
+48 537 500 745

Eine Nachricht senden
biuro@warsawproperties.pl