

Warszawa, Wola

Wohnung 52 m²

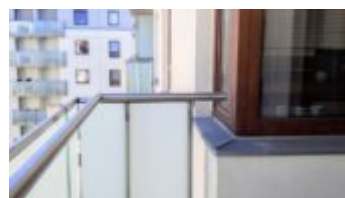
52
meter

2
zimmer

6
Etage

Vermietung

Preis **3 300 PLN**
preis pro m² **63 PLN**





Angebotsbeschreibung:

Spacious, 1-bedroom apartment in a modern apartment building, 6 minutes walk to the Rondo Daszyńskiego metro station.

GIEŁDOWA | KAROLKOWA | WALK TO RONDO DASZYŃSKIEGO | 52 m | 2 ROOMS | BALCONY | NO FURNITURE | 6TH FLOOR

BUILDING: The Capital Art housing complex was built in 2014, in a great location at Giełdowa 4 / Karolkowa Street, just 5 minutes from the city center, in the third line of development, which makes the estate really quiet. Modern design and high standard of workmanship (stone, glass, steel) give the estate a prestigious look.

The estate has 24-hour security and reception. The internal area is nicely developed, there is a playground for children. Downstairs there is a grocery store (Żabka), a cafe, a hairdresser, a wine shop, a sushi bar. The building can be entered from both Giełdowa Street and Siedmiogrodzka Street.

APARTMENT DESCRIPTION: Sunny, quiet apartment, on the 6th floor – located deep in the development, away from street traffic. No furniture.

- Living room connected to a bright kitchen (fridge, dishwasher, stove, oven, microwave) with a large balcony window and access to the balcony (east view)
- Separate bedroom with a spacious wardrobe
- Comfortable bathroom with bathtub and washing machine
- Hallway with wardrobe

Parking space in the underground garage for PLN 200/month.

Rent price: PLN 3,300 per month

Administrative costs, including advance payments for water and heating – PLN 803

Parking space in the underground garage – PLN 200.

Deposit: PLN 4,100

The tenant pays for electricity according to consumption and any underpayments resulting from water and heating consumption (settled once a year based on settlements from the administration). Rental for at least 12 months. Contract for an indefinite period with a 2-month notice period. As a real estate agency, we charge a one-time commission for the brokerage service (in the amount of half the rent + VAT).

SURROUNDING AREA: Capital Art Apartments is located at Giełdowa Street, near Karolkowa Street. Just 5 minutes from the city center, in the second line of development. From this place, everything is

close, regardless of whether we use a car, tram, bus, bike or walk. The estate is located in close proximity to the center of Warsaw, in one of the most dynamically developing districts of the city. It is surrounded by modern residential buildings, right next to the new business center and renowned office buildings and fashionable restaurants. Karolkowa and Grzybowska streets are around the corner, and Rondo Daszyńskiego and a metro stop are within walking distance. Full urban infrastructure in the area – restaurants, shops, services.

COMMUNICATION: The Capital Art Apartments building is located a 6-minute walk from the Rondo Daszyńskiego metro station, and there are numerous tram and bus stops nearby.

Du bist an dieser Immobilie interessiert
kontaktiere uns für einen Termin.

Ruf uns an
+48 537 500 745

Eine Nachricht senden
biuro@warsawproperties.pl